



# **City of Seattle**

## **2025 Energy, Utility & Resource Summit**

# House Keeping

- Take care of your needs
- Practice active listening and engagement
- Be curious
- Make connections here, follow-up afterwards, & stay connected
- Wi-fi is available:

# Agenda

9:00-9:10	Greetings & Land Acknowledgement
9:10-9:20	Welcome & Introductions: Dr. Shukri Olow, Human Service Department, YFE Division Director
9:20-10:00	Land Acknowledgement & Keynote Speaker: Janelle Jackson, Human Service Department, Safe and Thriving Communities
10:00-10:55	Panel Discussion: Javiera Wood, Office of Immigrant and Refugee Affairs, Kerry O'Meara, Community Connector North Helpline, and Kolbi Monasmith, United Indians of All Tribes Foundation
10:55-11:05	Community Partner Recognition
11:05-11:15	Break, Door Prize
11:15-11:45	Speakers: Demario Hall & Shamsu Said, Human Services Department, Tatiana Whitmire, Seattle Public Utilities, Tiffany Bascomb, Seattle City Light, and Henry Smith, Hopelink
11:45-11:50	Speaker: Melissa Levo, Seattle Public Utilities
11:50-12:00	Speaker: Elise Kalstad, Office of Innovation and Performance
12:00-1:00	Lunch, Door Prize, Resource Tables, Fun Surprise
1:00-1:10	Speaker: Kolbi Monasmith, United Indians of All Tribes
1:10-1:20	Speaker: Amado Luis, Amigos de Seattle
1:20-1:30	Speaker: Runkang Wang, Chinese Information Service Center
1:30-1:40	Speaker: Mara Brewster, Intercultural Children & Family Services
1:40-1:45	Speaker: Nansare Consolata, Therapy Fund Foundation
1:45-1:55	Speaker: Daphne Pie, Public Health Seattle & King County
1:55-2:10	Door Prize, Closing & Appreciations
2:10-2:30	Resource Tables
2:30-5:00	Tour Museum of Flight



# Seattle Human Services

**Equity • Support • Community**

Dr. Shukri Olow, Youth and Family Empowerment Division Director



# WELCOME!

## City of Seattle Energy, Utility, & Resource Summit



# UTILITY ASSISTANCE PROGRAMS



**Seattle**  
Human Services  
Equity • Support • Community



**Seattle**  
City Light



**Seattle**  
Public  
Utilities

# WELCOME TO ALL ATTENDEES

- Akin Family Resource Center
- **Amigos de Seattle (Presenter & Resource Table)**
- **Arc of King County (Resource Table)**
- Association of Zambians in Seattle
- **Atlantic Street Center (Resource Table)**
- Ballard Food Bank
- **Byrd Barr Place (Resource Table)**
- Catholic Community Services
- **Center for MultiCultural Health (Resource Table)**
- **Chinese Information and Service Center (Presenter & Resource Table)**
- **City of Seattle Human Services Department (Presenter & Resource Table)**
- **City of Seattle Information Technology (Resource Table)**
- **City of Seattle Office of Housing (Resource Table)**
- **City of Seattle Office of Innovation and Performance (Affordable Seattle) (Presenter & Resource Table)**
- **City of Seattle Office of Sustainability and Environment (Resource Table)**

# WELCOME TO ALL ATTENDEES

- **City of Seattle Utility Assistance Programs - Emergency Assistance Program, Emergency Bill Assistance, Project Share, and Utility Discount Program (Presenter & Resource Table)**
- **El Centro de la Raza (Resource Table)**
- Families of Color Seattle
- FamilyWorks
- Green Property Solutions
- Highline School District
- **Hopelink (Presenter)**
- **Intercultural Children & Family Services (Presenter)**
- IDIC Filipino Senior and Family Services
- Innovation Heights Academy
- Khmer Community of Seattle King County
- Kinship Caregivers
- Lifelong
- Low Income Housing Institute



# WELCOME TO ALL ATTENDEES

- Mercy Housing Northwest
- Mt. Baker Housing Association
- Neighborhood House
- North Helpline
- Para Los Niños de Highline
- **Public Health – Seattle King County (Resource Table and Presenter)**
- Queen Anne Helpline
- Salvation Army
- **Seattle City Light (Presenter & Resource Table)**
- **Seattle Disability Commission (Resource Table)**
- Seattle Department of Neighborhoods
- Seattle Public Schools
- **Seattle Public Utilities (Presenter & Resource Table)**
- Seattle Youth Employment Program
- Somali Family Safety Task Force
- Sound Generations

# WELCOME TO ALL ATTENDEES

- **Southwest Youth and Family Services (Resource Table)**
- St. Vincent de Paul
- **Therapy Fund Foundation (Presenter & Resource Table)**
- **United Indians of All Tribes (Presenter & Resource Table)**
- University Food Bank
- Villa Comunitaria
- Washington State Community Action Partnership
- West Seattle Food Bank

# Keynote Speaker: Janelle Jackson



Janelle is a Senior Planner for the Seattle Human Services Department Safe & Thriving Communities Division, where she supports the planning and procurement of up to \$20 million in community safety investments that provide services across a continuum of prevention, intervention, and restoration strategies with the goal of further reducing gun violence.

She has worked in the human services field for 13 years working with humans in utero to her eldest client, aged 99 years old. Her work has touched the lives of pregnant and post-partum mothers, parents, families, young people, older adults, and communities impacted by substance use disorder, domestic violence and gun violence. While utilizing cultural grounding and best practices in the health and social determinants of health field; Janelle carries forward and amplifies the wisdom imparted on her from her elders and traditional ceremonies from the Navajo Nation. She strives to walk in Ke', in harmony with kinship, clanship, and good relations with the people she has the pleasure of connecting with.

# Home



# “It All Began In Burien...”





# Home



# Panel Discussion

- Javiera Wood, Office of Immigrant and Refugees Affairs
- Kerry O'Meara, Community Connector North Helpline
- Kolbi Monasmith, United Indians of All Tribes Foundation



# Panel Discussion Questions

- How have you adjusted/adapted the approach to your work to support those community members that are most vulnerable and/or in greatest need?
- What advice would you give to CBOs, service providers, public institutions, and government agencies to uplift, instill hope, and provide a sense of stability to our neighbors?
- What are you most hopeful for?
- How do you approach building trust and rapport with community members, [especially those who may be hesitant or fearful]?



# Panel Discussion Questions

- How do you ensure that all community voices are heard, particularly those from marginalized or less vocal stakeholders?
- What does accountability to community mean to you?
- How has the mission/vision of your organization become more or less “real” for you given the uncertain times we’re in?
- How do you remain resilient and energized?

# Community Partner Recognition

Chinese Information Service



# Community Partner Recognition

North Helpline Food Bank



# Community Partner Recognition

Sound Behavioral Health



Hope. Healing. Recovery.

# Break

- Self-care
- Connect with others and meet someone new
- Visit resource tables
- Door prize drawing
- See you at 11:15 am





**City of Seattle**

# Utility Discount Program (UDP)

Receive an ongoing discount on your Seattle City Light and Seattle Public Utilities bills



**Seattle  
Public Utilities**



**Seattle  
City Light**



**Seattle  
Human Services**

# Overview

## Utility Discount Program

**DISCOUNT**



**60%**



**50%**

You can receive  
60% off your  
Seattle City Light  
bills and 50% off  
your Seattle Public  
Utilities bills.



**City of Seattle**

## How to Qualify

- You qualify if your gross household income is 70% of State Median Income or lower.
- How do you verify your household income?
  - In general, you can show one-month of pay stubs or other income documents.
  - If you are self-employed, you can show three months of income. You may be asked to show other documents to qualify.
  - If you receive SNAP benefits, you can show your DSHS award letter.
- You can recertify every 2 years or every 3 years for seniors (65+).





## 2025 Income Guidelines

Size of Your Household	Gross Monthly Income	Gross Yearly Income
1	\$4,016	\$48,192
2	\$5,251	\$63,012
3	\$6,487	\$77,844
4	\$7,722	\$92,664
5	\$8,958	\$107,496
6	\$10,193	\$122,316
7	\$10,425	\$125,100
8	\$10,657	\$127,884
9	\$10,888	\$130,656
10	\$11,352	\$136,224
Each Additional Household Member	+ \$232	+ \$2,784



## How can you apply?



- You can call (206) 684-0268, from Monday through Thursday, to apply



- You can visit our office or attend an outreach event to meet with someone who can help



- You can return your signed paper application with the required documents by mail, email, or fax



- You can complete an online application, which is available at <https://seattle.gov/UDP>



## How can you contact



### **Address:**

810 3rd Ave, Suite 430  
Central Building between  
Marion and Columbia St.

*Walk-in hours: 8:00 to 10:00 AM AND  
12:00 to 2:00 PM Monday through Friday*



**Email:** [UDP@seattle.gov](mailto:UDP@seattle.gov)



**Telephone:** (206) 684-0268

**Fax:** 206-621-5012





**City of Seattle**

# Bill Assistance Programs

Receive financial support for Seattle City Light and Seattle Public Utilities bills



**Seattle  
Public Utilities**



**Seattle  
City Light**



Seattle Public Utilities

# Emergency Assistance Program (EAP)

## Overview

### W

- You can participate in EAP for immediate financial assistance for Seattle Public Utilities (Water, Sewer, Solid Waste) bills
- You can qualify to receive up to **\$518**. If your household has children under 18, you can receive up to **\$1,036**.



# How can you qualify?

You can qualify if you meet the following requirements.

- **You are a Seattle Public Utilities customer and have an account in your name.**
- You live in a single-family residence only. (No duplexes, apartments, or commercial properties).
- Your gross household income is 80% of the Washington State median income or lower.

Size of Your Household	Gross <i>Monthly</i> Household Income	Gross <i>Annual</i> Household Income
1	\$4,589	\$55,068
2	\$6,001	\$72,012
3	\$7,413	\$88,956
4	\$8,825	\$105,900
5	\$10,237	\$122,844
6	\$11,649	\$139,788
Each additional	+ \$265	+ \$3,180



# How can you apply?

You can complete an application in two ways:

- Online application: <https://utilityassistance.seattle.gov>
  - (You can use one application to apply for multiple assistance programs.)
- Paper or PDF application:
  - Email: [SPU\\_EAP@seattle.gov](mailto:SPU_EAP@seattle.gov)
  - Call: 206-684-3000
  - Visit: <https://seattle.gov/utilities/affordable>
  - (Please return the completed and signed application with the required documents by mail, email, or fax.)







Seattle City Light

# Emergency Bill Assistance (EBA)

## Overview

- You can receive immediate financial help for your Seattle City Light bill with past due balances.
- You can qualify to receive up to **\$710**. If your household has children under 18, you can receive up to **\$1,420**.



## How can you qualify?

- You are a **Seattle City Light** and have an **account in your name**.
- Your account has at least a **\$250 or greater past due balance**.
- Your gross household income is 80% of the Washington State median income or lower.

Size of Your Household	Gross <i>Monthly</i> Household Income	Gross <i>Annual</i> Household Income
1	\$4,589	\$55,068
2	\$6,001	\$72,012
3	\$7,413	\$88,956
4	\$8,825	\$105,900
5	\$10,237	\$122,844
6	\$11,649	\$139,788
Each additional	+ \$265	+ \$3,180



# How can you apply?

You can complete an application in two ways:

- Online application: <https://utilityassistance.seattle.gov>
  - (You can use one application to apply for multiple assistance programs.)
- Paper or PDF application:
  - Email: [SCL\\_InfoEBA@seattle.gov](mailto:SCL_InfoEBA@seattle.gov)
  - Call: 206-684-3688
  - Visit: <https://seattle.gov/city-light/BillAssistance>
  - (Please return the completed and signed application with the required documents by mail, email, or fax.)





Seattle City Light

# Project Share

# Overview

- Project Share provides **\$250** in immediate financial help for past due Seattle City Light Accounts.
- Project Share **can be combined with Emergency Bill Assistance** if you qualify for both programs.
- You can qualify if your household earns less than **80% of Area Median Income.**

# How can you qualify?

- You can qualify if you are a residential customer with a past due balance of \$250 or more.
- You can qualify if your gross household income is 80% of Area Median Income or lower.
- If approved, you will receive a **\$250 bill credit** once a year.

2025		
Size of Your Household	Pre-Tax (Gross) Monthly Household Income	Gross Yearly Household Income
1	\$7,071	\$84,852
2	\$8,080	\$96,960
3	\$9,088	\$109,056
4	\$10,096	\$121,152
5	\$10,905	\$130,860
6	\$11,713	\$140,556
Each additional	+ \$809	+ \$9,708

# How can you apply?

You can complete an application in two ways:

- Online application: <https://utilityassistance.seattle.gov>
  - (You can use one application to apply for multiple assistance programs.)
- Paper or PDF application:
  - Email: [SCL\\_InfoEBA@seattle.gov](mailto:SCL_InfoEBA@seattle.gov)
  - Call: 206-684-3688
  - Visit: <https://seattle.gov/city-light/BillAssistance>
  - (Please return the completed and signed application with the required documents by mail, email, or fax.)





# Final Overview

## Utility Discount Program

This program provides a 60% discount on City Light bills and a 50% discount on Seattle Public Utilities bills.

**DISCOUNT**

 **60%**

 **50%**



Seattle Public Utilities

## Emergency Assistance Program

This program provides help for your Seattle Public Utilities bill for water, sewer, and



Seattle City Light

## Emergency Bill Assistance & Project Share

These programs provide help for your City Light electricity bill.



# Utility Assistance Programs



SCAN ME

<https://seattle.gov/UtilityBillHelp>



Seattle  
Public Utilities



Seattle  
City Light



Seattle  
Human Services



**Seattle City Light**

# **Federal & State Energy Assistance**



## LIHEAP (Low-Income Home Energy Assistance Program)

- Assistance for heating and cooling costs to households at or below 150% Federal Poverty Level
- Payment support from **\$250 - \$1250 per year** based on household's annual heating costs, household income, and # of people in the household.
- If qualified for LIHEAP, clients might be eligible for 2 additional grants associated with LIHEAP; Arrearage from \$500-\$2500, and Supplemental flat amount of \$500.
- If approved, payment is sent directly to the energy provider (e.g., City Light) and applied to any outstanding balance and/or placed as a credit on the customer account.
- LIHEAP is administered by community organization partners at Byrd Barr Place (Seattle area), Hopelink (North and East King County), and Multi-Service Center (South King County)
- Learn more at [seattle.gov/city-light/BillAssistance](https://seattle.gov/city-light/BillAssistance)





# LIHEAP 2025-2026 Income Guidelines

Household Size	Average Monthly Gross (Pre-Tax) Household Income
1	\$1,956
2	\$2,643
3	\$3,331
4	\$4,018
5	\$4,706
6	\$5,393

## SHEAP (State Household Energy Assistance Program)

State Household Energy Assistance

- Assistance for heating and cooling costs to households at or below **80% Area Median Income (AMI)**
- Payment support from **\$200 - \$1000 per year** based on household's annual heating costs, household income, and # of people in the household.
- If approved, payment is sent directly to the energy provider (e.g., City Light) and applied to any outstanding balance and/or placed as a credit on the customer account.
- SHEAP is administered by community organization partners at Byrd Barr Place (Seattle area), Hopelink (North and East King County), and Multi-Service Center (South King County)
- Learn more at [seattle.gov/city-light/BillAssistance](https://seattle.gov/city-light/BillAssistance)



# SHEAP 2025-2026 Income Guidelines

Household Size	Average Monthly Gross (Pre-Tax) Household Income
1	\$7,071
2	\$8,080
3	\$9,088
4	\$10,096
5	\$10,905
6	\$11,713



# Toilet Replacement Programs

Melissa Levo

October 2024

Seattle Public Utilities



City of Seattle

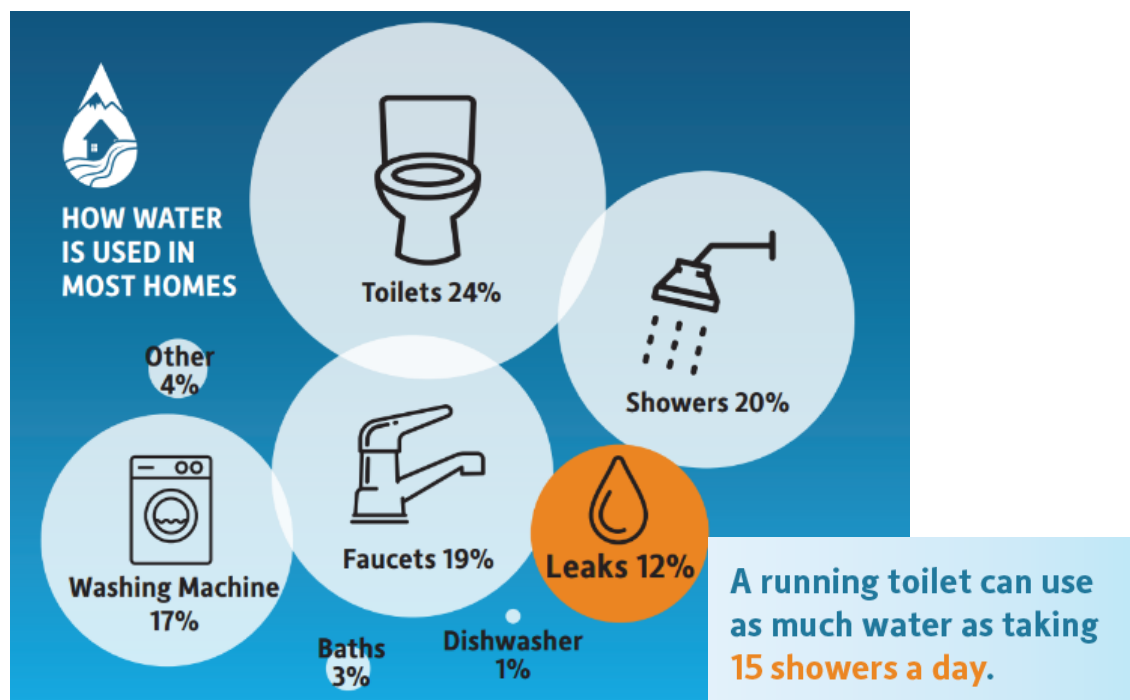


## We help replace old toilets

- “Old” means made in 2010 or earlier



# Why toilets?



# Free Toilets - Overview

- Single Family/Condos: 2 free toilet and installation.
  - Renters in single family homes okay with homeowner permission.
- Multifamily Housing Providers: 2 free toilets per unit and free common area clothes washers
- New toilets are 1.1 gallon per flush (gpf) or less and meet performance standards (MaP PREMIUM rated)
- **Retrofits only** – no new construction

# Free Toilets for Single Family/Condos

- 2 free toilets and installation
- Implemented by Sound Generations' Minor Home Repair program.
- Process:
  - Complete online Civiform application
  - Sound Generations schedules appt
    - [mhr@soundgenerations.org](mailto:mhr@soundgenerations.org)
    - (206) 448-5751
  - The new toilet is provided, and the old one is recycled.



# Qualifications (single family/condos)

- SPU is the property's water provider
- Owner-occupied or owner permission
- Meet income qualifications
  - Resident is on the Utility Discount Program
    - OR -
  - Makes less than 80% of state median income  
(Ex: 1 person \$50,604; 4 people \$97,308)
- Existing toilets made in 2010 or earlier



# Free Toilets for Housing Providers

- Rebate for replacing toilets and common area clothes washers
  - 100% of cost of the fixture
  - \$200 per toilet for installation
  - 100% of clothes washer installation cost
- Process
  - Apply and receive authorization
  - Buy and install toilets
  - Rebate issued after installation



# Qualifications (housing providers)

- SPU customer
- Non-profit multifamily property (4 units or more)
- Building is subject to rent or income restrictions
  - Less than 80% of state median income
- Existing toilets made in 2010 or earlier (no new construction)



# Market Rate Rebate Programs

- \$100 rebate per toilet
  - New toilet must be 1.1 gpf or less and MaP Premium rated
  - No income requirements
  - Larger service area
  - Programs for all sectors



**SAVING WATER PARTNERSHIP**  
*Make a difference. Use water wisely.*





# How to participate

- Free Toilets for single family and condos
  - Contact Sound Generations:
    - [mhr@soundgenerations.org](mailto:mhr@soundgenerations.org) or (206) 448-5751
- Free Toilets for low-income housing providers
  - [Apply online](#)
  - Or email [melissa.levo@seattle.gov](mailto:melissa.levo@seattle.gov)
- Market rate programs
  - [Savingwater.org](http://Savingwater.org)

# Questions?

- Melissa Levo (Program Manager)
  - 206-733-9137
  - [melissa.levo@seattle.gov](mailto:melissa.levo@seattle.gov)

# Affordable Seattle

## 2025 Community Update

Innovation & Performance



City of Seattle

# Seattle.gov/affordable

- ✓ One place to for all City affordability programs
- ✓ 40 programs
- ✓ Up to \$65,000 in savings
- ✓ Quick Apply via CiviForm

The screenshot shows the Seattle.gov/affordable website. The header includes the Seattle logo, a language dropdown set to English, a search bar, and a 'Pay or Apply' button. A navigation bar lists various city departments: CITY ADMINISTRATION, PUBLIC SAFETY, ASSISTANCE AND UTILITIES, LEARNING AND EDUCATION, EXPLORE THE CITY, and TRANSPORTATION AND DEVELOPMENT. The main content area is titled 'Assistance and Discounts' with a subtext: 'Save money on utilities, childcare, food, housing, home repairs, internet, and transportation.' To the right is a photo of three people working at a table. Below this is a section titled 'Find out how much money you could save in just 2 minutes'. It contains two main input sections: 'Household Size' with a dropdown menu currently showing '1 person' and a note that household size includes the individual, spouse, children under 19, and adult dependents; and 'Household Income' with a note that eligibility is based on gross pre-tax income. The income section has a radio button for 'Yearly' (selected) and 'Monthly', a text input field showing '\$0', and a slider ranging from '\$0' to '\$200,000+'. A 'Check for Programs' button is located to the right of the income section.

Seattle English Search Pay or Apply

CITY ADMINISTRATION PUBLIC SAFETY ASSISTANCE AND UTILITIES LEARNING AND EDUCATION EXPLORE THE CITY TRANSPORTATION AND DEVELOPMENT

## Assistance and Discounts

Save money on utilities, childcare, food, housing, home repairs, internet, and transportation.

### Find out how much money you could save in just 2 minutes

Quickly find programs you may be eligible for based on your household size and income

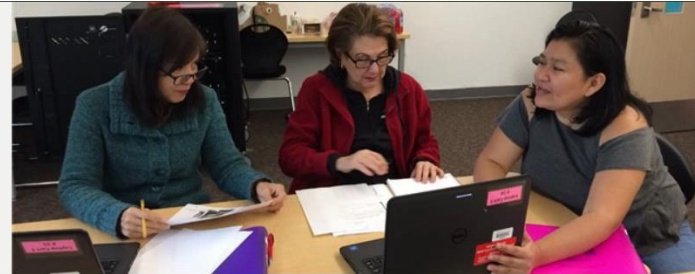
**Household Size**  
Household size includes the individual, spouse, children who are under 19 years old, and any adult dependents  
1 person

**Household Income**  
Eligibility is based off gross (pre-tax income)  
Average Income  
Yearly (selected) Monthly  
\$0 \$200,000+

Check for Programs

## Assistance and Discounts

Save money on utilities, childcare, food, housing, home repairs, internet, and transportation.



## Find out how much money you could save in just 2 minutes

Quickly find programs you may be eligible for based on your household size and income



### Household Size

*Household size includes the individual, spouse, children who are under 19 years old, and any adult dependents*

1 person ▾



### Household Income

*Eligibility is based off gross (pre-tax income)*

#### Average Income

☒ Yearly  
☐ Monthly

  
\$0 \$200,000+

Check for Programs



Childcare and Education



# Seattle.gov/affordable



Seattle



English



Search



Pay or Apply

## All Filters

Filter by entering keywords



### Application type

No Income Requirements

Quick Apply (CiviForm)

### Programs for

Adults

Children (0-10)

Teens (11-18)

Seniors

People with Disabilities

### Filter by category

General Services

Childcare and Education

Fees & Fines

## Results (17)

4 person household, \$80,000/year

[Clear Results](#)



### Activity and Childcare Scholarships at Community Centers (all ages)

Get 50-90% off childcare, preschool, and activities like fitness classes and swimming lessons.

\$ 3,199 average annual savings



### Seattle Preschool Program (ages 3-4)

Free or reduced preschool tuition is available based on your income.

\$ 12,000 average annual savings



### Child Care Assistance Program (ages 12 and under)

Get 25-70% off childcare if you are a working or student parent with an income that qualifies.

\$ 7,500 average annual savings



### Utility Discount Program



### Emergency Bill Assistance for Water, Sewer, and Garbage



### Emergency Bill Assistance for Electricity



# Seattle.gov/affordable

## Contact us!

[civiform@seattle.gov](mailto:civiform@seattle.gov)

[Elise.Kalstad@seattle.gov](mailto:Elise.Kalstad@seattle.gov)

[Matthew.Sprenke@seattle.gov](mailto:Matthew.Sprenke@seattle.gov)



## Lunch, Raffle, and Visit Resource Tables

- Enjoy lunch catered by McCormicks & Smick's and fellowship with one another
- Self-care
- Door prize drawing
- Visit resource tables
- Vibe out with Vibe Bingo
- See you at 1 pm





UNITED INDIANS  
OF ALL TRIBES FOUNDATION



# Rooted in Indigenous Resistance

- **Our mission** is to provide educational, cultural and social services that reconnect Indigenous people in the Puget Sound region to their heritage by strengthening their sense of belonging and significance as Native people.
- **Our vision is** to be a social service provider, community center, and cultural home for urban Indians.

# Our Programs

- Daybreak Star Radio
- Daybreak Star Preschool
- Sacred Circle Giftshops and Art Gallery
- Daybreak Star Cultural Center
- **Community Services:**
  - Labateyah Bridge Housing Programs
  - Homelessness Prevention
  - Elders Nutrition Program
  - Veterans Pathfinder Program
  - Native Workforce Services
- **Family services:**
  - Unci Makha Home Visiting Program
  - Foster Care Support





# Native Workforce Services Program

---

Started in 2011 through funding by the U.S. Department of Labor.

---

Provides case management and supportive services through education and training programs

---

Assist with job searches and applications

---

Trainings on City of Seattle worker's rights

# Our Grant Projects

- **Seattle Office of Labor Standards:** Training available for anyone working in or considering working in Seattle.
- **Workforce Innovation and Opportunity Act:** Funding only for Native Americans, Alaskan Natives, First Nations, or Native Hawaiians who can prove enrollment in a state or federally recognized tribe.
  - Open to all career fields.
- **Native Infrastructure Careers and Education (NICE) Project:** Funding is open to anyone who identifies as Indigenous.
  - Targeting careers in transit or electric transportation.
  - Occupations include software engineers, application developers, information technology, electricians, power-line installers, industrial, civil, and mechanical engineers, machinists, technicians, and more.
- **Washington State Department of Financial Institutions: Coaching and Mentorship Grant**
  - One-on-one coaching and financial literacy workshops

Clients can be enrolled in all programs.



Receiving \$2 million over five years and funded by H-1B visas to meet the skilled employment needs of the Bipartisan Infrastructure Law



Convene a public-private partnership to develop and implement worker-centered sector strategy.



Targeting occupations and training in renewable energy and transportation.



Target Occupations: advanced manufacturing; information technology; civil, electrical, and industrial engineers; and other professional, scientific, and technical occupations



Aim to serve Indigenous adults 18 years and older with support through training

## U.S. Department of Labor's Building Pathways to Infrastructure Jobs

## CAREER PATHWAYS

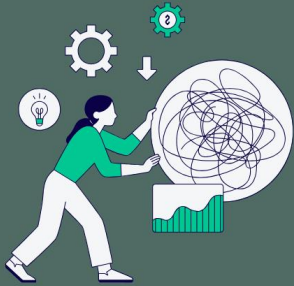
### Skilled Trades

- Automotive Mechanics
- Electricians
- Machinists
- Technicians
- Other trades



### Engineering

Civil, mechanical and electrical engineers.



### Management

Sustainable building technology.



### Information Technology

Software and app developers, cyber security, and more!

Native  
Infrastructure  
Careers and  
Education (NICE)  
Pathways Project

## Goals and Actions

### Native Infrastructure Careers and Employment (N.I.C.E.)

Convene a transit and electrified transportation sector partnership with industry leaders and public partners to increase coordination and cooperation.

Increase Indigenous enrollment in industry related training and education programs.

Increase Indigenous representation in mid- to high-skilled occupations.



## Transit and Electrified Transportation Sector

The Puget Sound region is investing billions in expanding light rail, electrifying transportation, and increasing EV charging.

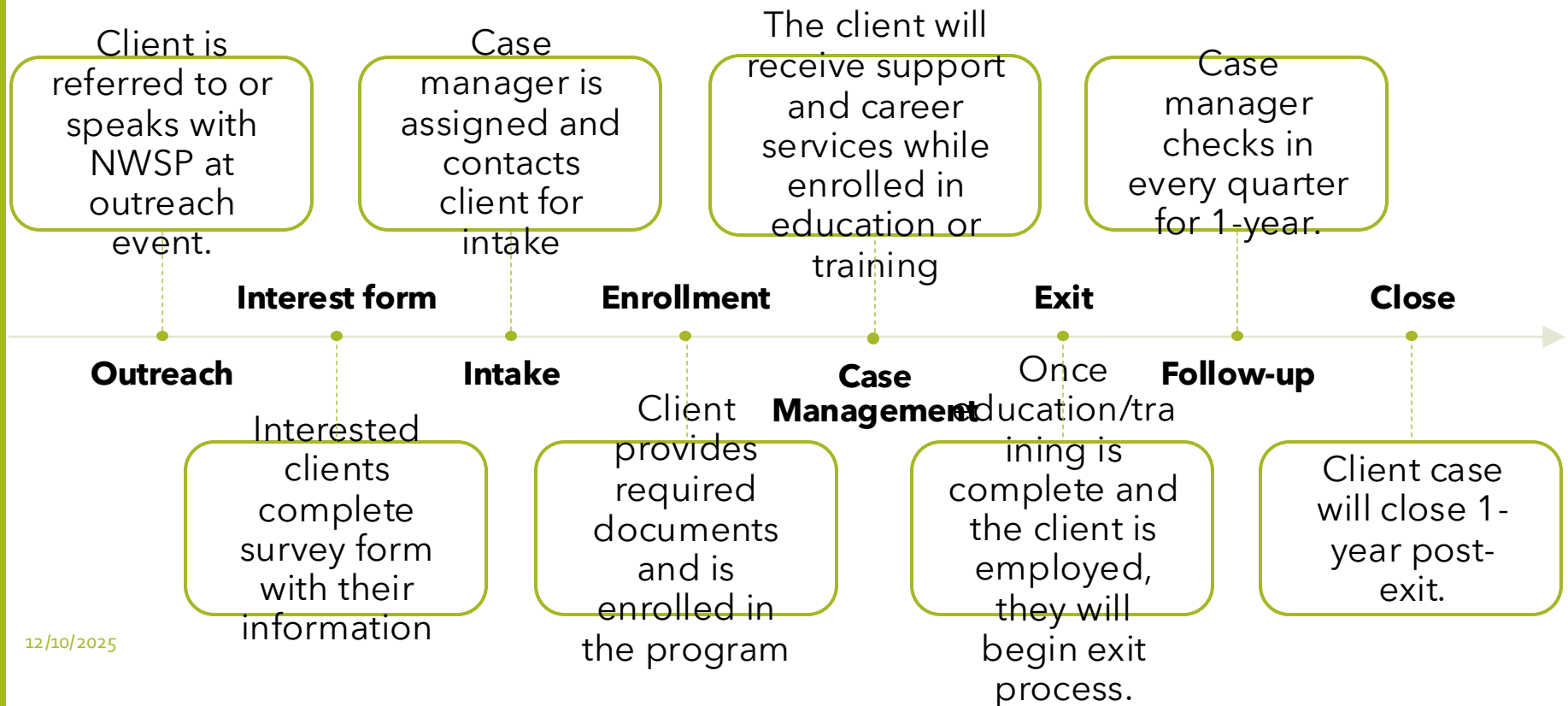
Funding from the Bipartisan Infrastructure Bill

Sound Transit's expansion project

King County Metro's transition to electric buses

Seattle City Light's Transportation Electrification Strategic Plan

# NWSP Client Intake Process



# Eligibility

Identify as Indigenous

Be unemployed or low-income

Enrolling in an education or training program related to EV, public transit, or green energy

Work or Reside in Puget Sound area, and able to meet in King, Pierce, or Snohomish Counties

18 years or older

Male participants must be enrolled in Selective Service.

# Services We Provide



CAREER SERVICES



SUPPORT SERVICES



EDUCATION AND  
TRAINING SERVICES

Career Services	Support Services	Education and Training Services
Job search and placement assistance	Transportation assistance such as gas cards or bus passes	Case management through education or training activities
Resume and cover letter building	Education and Tuition related assistance with a yearly limit.	On-the-job training
Career counseling and planning	Work or interview clothing	Occupational skill training
Outreach services and provision of information about connective services and eligibility for other social services	Limited auto repair, but not general maintenance. Cannot exceed \$2500. And requires 3 estimates from different mechanics.	Skill upgrading and retaining
Development of an individual employment plan	Work related tools.	Entrepreneurial and small business development technical assistance and training
Provision of information about financial assistance for training	Physicals or medical screenings required for a job	Job readiness training
Provision of information about support services and eligibility.	License fees or credential fees such as driver's license or medical licenses as required for employment	Adult basic education, GED attainment, literacy training, and English language training
Assistance in establishing eligibility for financial assistance for training	Eyeglasses or protective eyewear	Assistance with financial aid and scholarship applications
Work experience in the public or private sector	ID related fees such as state identification	Financial and digital literacy training
Provision of information and referrals to education and training institutions	Limited rental and utility assistance. Only allowed once they have been denied services from all other entities.	Limited assistance with training costs including books, tuition, testing fees, and other educational related fees.
Information regarding City of Seattle Labor Ordinances and referrals to Office of Labor Standards	Background check fees as required for employment.	Admission fees or application fees for higher education providers.

# Our Sector Partnership is community and industry driven.



Education and training providers will work with NWSP to place and support participants through their respective programs.



Employer partners will advise on which occupations and skills are needed and how participants can get hired.



Work together to design training and employment programs that are responsive to worker's voices and meet the needs of the industry sector.



Everyone provides regular feedback and works together to identify issues in the sector and changes in labor market demand or education opportunities.



Everyone participates in quarterly check-ins and discussions

# Contact Information



- Kolbi Monasmith: Program Manager
  - 425-515-0051
  - [Kmonasmith@unitedindians.org](mailto:Kmonasmith@unitedindians.org)
- Sharlene Wong: Outreach Coordinator
  - 206-588-9096
  - [Swong@unitedindians.org](mailto:Swong@unitedindians.org)



# Amigos de Seattle

*Non-Profit 501C3*

[amigosdeseattle2014@gmail.com](mailto:amigosdeseattle2014@gmail.com)







# Mission

To empower Latinx and BIPOC communities through the promotion of culture, education, environmental awareness, and community communication.





# Vision

To be a thriving community where culture and health come together to create greater opportunities and well-being for all.



# Art and folklore



- Exhibition of traditional costumes
- Traditional dance performances
- Cultural festivals
- Live music and folk ensembles
- Artisan crafts and handmade art displays
- Storytelling and oral traditions
- Visual art exhibitions inspired by heritage
- Workshops on folk art, weaving, and traditional instruments







# Health

- Mental health education
- Healthy food for the community
- Preventive care, access to local resources
- Oral health education
- Workshops on environmental health and disease prevention.



# Environment



- Ecological art and environmental education
- Awareness of the HEAL Act
- Recycling and waste reduction initiatives





## Contact



[www.adsradio.org](http://www.adsradio.org)



[amigosdeseattle2014@gmail.com](mailto:amigosdeseattle2014@gmail.com)



206-471-4482 / 206-471-5322

Thank you!

# Runkang Wang, Chinese Information Service Center







Intercultural Children and Family Services

Presentation by Mara Brewster

# Family Comes First Program

# Program Information

- The Family Comes First Program uses Family Navigation to support families involved in the Department of Youth Children and Family Services (DCYF).
- Family Navigation includes connecting families with culturally specific community resources in the area.
- The Program also uses basic needs financial assistance to immediately support families in need. This can include Utility Bill assistance.



# Family Comes First Mission

To reduce the disproportionate amount of African American Youth entering the foster care system and keep families together.

Parents can not flourish when they are victims of the system themselves, dealing with generational traumas, poverty and lack of support. The Family Comes First Program is a support system for families at high risk of child displacement.

# FAMILY COMES FIRST

Intercultural Children and Family Services  
<https://www.iccfs.org>

Serving Black and African American Families involved in the department of  
children and family services (DCYF)

## Our Services:

Basic Needs (Gift Cards, Bill  
Assistance)  
Parenting Classes  
Fatherhood Classes  
Connection to Community  
Resources  
Diapers and Wipes




Interested? Scan the QR Code



Connect With a Family  
Navigator

**Mara Brewster**

King County


 206-946-0853


 mbrewstericcfs@gmail.com


 15 South Grady Way, suite  
#434 Renton WA 98057

**Qulina Peterson**

Pierce County

 253-652-4924

 qulinapiccfs@gmail.com

 6124 Motor Ave. SW Lakewood,  
WA 98499

# Our Case Management

- Homelessness
- Domestic Violence Survivors
- Disability Support
- Mental Health Support
- Poverty
- Food Insecurity
- At Risk Youth and Teens
- DCYF advocate
- Prenatal Support
- Addiction
- Job/Training/ and College support

# Programs of Support within ICCFS

Chicago Parenting Program (an African American Parenting Class)

Parents as Teachers (PAT)

MMH (maternal mental health)

Fatherhood Engagement

123... JUMP kindergarten Readiness

Parent Child plus

Kinship Alliance

# THANK YOU!

Questions?



# Nansare Consolata, Therapy Fund Foundation





**Public Health-Seattle & King  
County | Access & Outreach  
Team**  
**401 5<sup>th</sup> Ave #1000**  
**Seattle, 98104**  
**1-800-756-5437**  
[chap@kingcounty.gov](mailto:chap@kingcounty.gov)  
[www.kingcounty.gov/outreach](http://www.kingcounty.gov/outreach)

Robbie Carrier ([Robbie.carrier@kingcounty.gov](mailto:Robbie.carrier@kingcounty.gov))  
 Education Specialist  
 Daphne Pie  
[Daphne.pie@kingcounty.gov](mailto:Daphne.pie@kingcounty.gov)  
 Regional Health Services Administrator



# Apple Health/Medicaid: What's changing.

## To **understand** health insurance and what's changing, you must **understand** health care reform!

**March 2010:** US government enacts the Patient Protection and Affordable Care Act (the "ACA").

**The ACA goals** were to make health insurance more affordable, increase access and improve health care quality.

**2013:** Each State had to create their own **marketplace** or website to shop for insurance.

**Our marketplace to go shopping for insurance is called:**

**Wahealthplanfinder.org**

**Each state had the option to create a Medicaid Expansion program (19-64).**

(33 states chose to use the federal marketplace Healthcare.gov)

- Washington State created a new Medicaid/Apple Health expansion program.
- Most Medicaid enrollment moved to Wahealthplanfinder.org
- Uninsured rates declined

**2025 & beyond: New changes**, some by Congress, some by rule-making will impact:

- **Adult Medicaid expansion** will be impacted.
- **"Marketplace" enrollment** also impacted by changes.

**This year, under the new H.R.1 bill, the Federal Laws changed.**

Who can get health insurance, how to get approved & how to maintain their coverage will be different.

For Medicaid or Apple  
Health, we'll see the  
impact of these  
changes in  
**2026.**

Let's review!!

# Changes in 2026-2029 for Apple Health-Medicaid

---

2026

**Refugees, asylees and other non-citizen** adults lose eligibility.

New requirements for 2027 must be in place by 12/31/26.

2027

**Work requirements** for adults age 19-64 (work, training, or community engagement, for 80 hrs./ month, with exemptions).

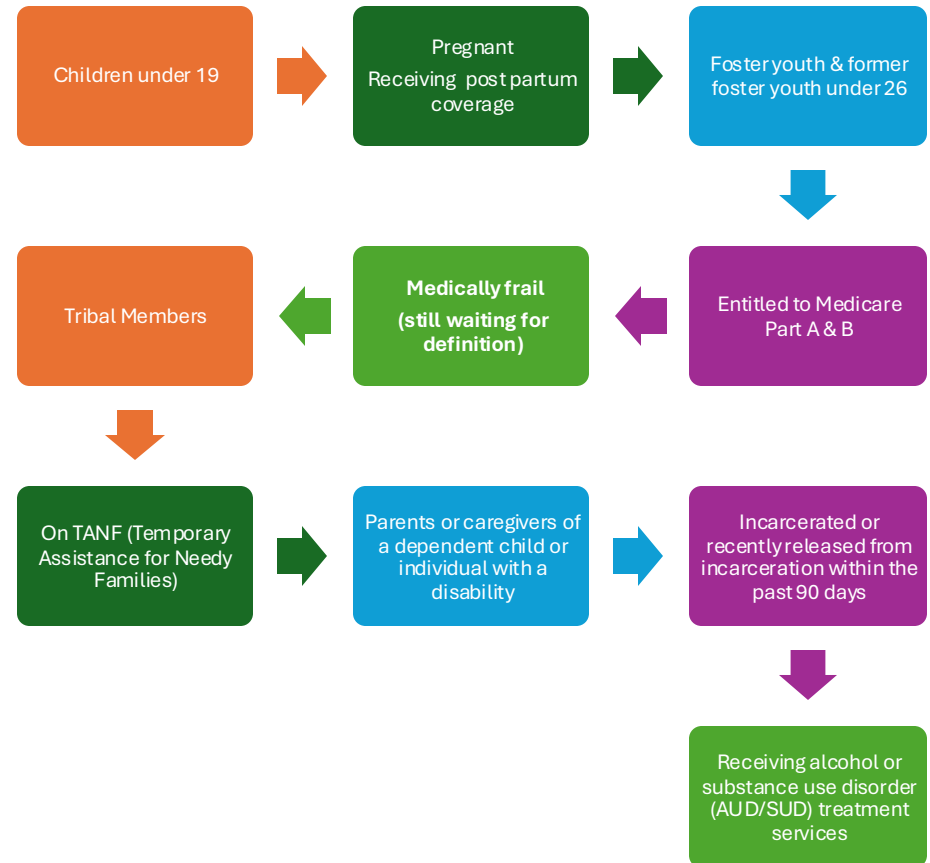
More frequent **eligibility checks** for adults (every 6 months).

2028-29

Cost sharing (Oct 2028) – new up to \$35 co-pay for many services.

Address verification (Oct 2029)

## Is anyone exempted from work requirements?



Since the Medicaid/Apple Health changes won't happen until late 2026, let's review what Medicaid programs are available now.





# Health Insurance Options in Washington State:

Apple Health is the umbrella name of most of our health insurance programs in Washington State.

## Apply at: [Wahealthplanfinder.org](https://www.wahealthplanfinder.org)

- **Apple Health Adults (19-64)**
- *Apple Health Children (0-18)*
- *Apple Health Pregnancy*
- *Apple Health-After Pregnancy*
- *Apple Health COFA Islanders*
- *Apple Health Alien Emergency Medical (AEM)*
- *Apple Health Expansion (Non-Citizens)*
- *Qualified Health Plans (QHP-Private Plans)*

## Submit paper application to Health Care Authority:

- *Apple Health Family Planning*

## Department of Social & Health Services (DSHS) [Washingtonconnection.org](https://www.washingtonconnection.org)

- *Aged Blind Disabled -Classic Medicaid*



Although  
Medicaid  
changes  
are months  
away, what  
can we do  
now?

---

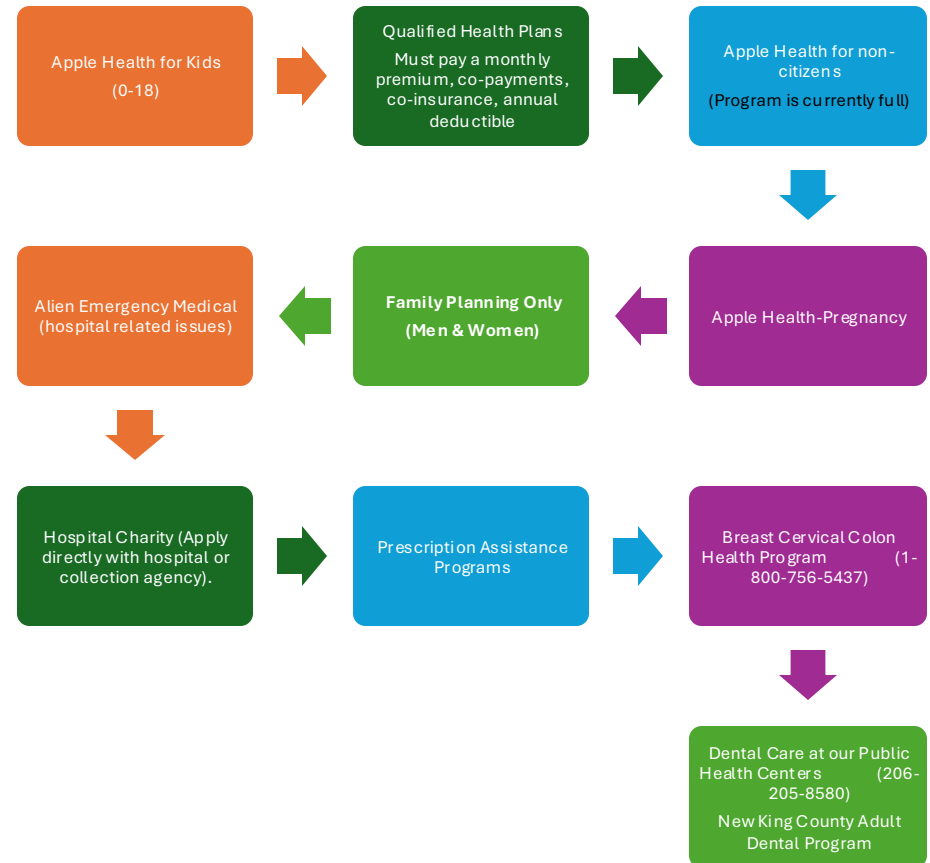
Tell your clients to continue to apply for Apple Health for adults. And all Apple Health programs.

---

Were working with HCA to determine what does it mean to be “medically frail”. Once we know, we can work with clients to get them exempted.

---

## What about clients who are non-citizens are they eligible for any programs?



What happens a client is over  
income for Apple Health?  
Or not eligible due to  
citizenship?

They can go shopping for a private health plan.....Qualified Health Plan (QHP).

---

In King County, we have 10 health insurance companies and 63 health plans to choose from.

Unlike Apple Health, a **QHP isn't free.**

Residents (in most cases) will have a monthly premium, co-payments, co-insurances & annual deductible.

Non-citizens who are Washington State residents **can purchase a QHP.**

**There will be limited premium assistance through a Cascade Care Assistance program & Public Health Premium assistance.**




In June Health and Human Services (HHS) who has oversight of Qualified Health Plans, issued their new rules and changes.

Some of those changes have already been implemented.

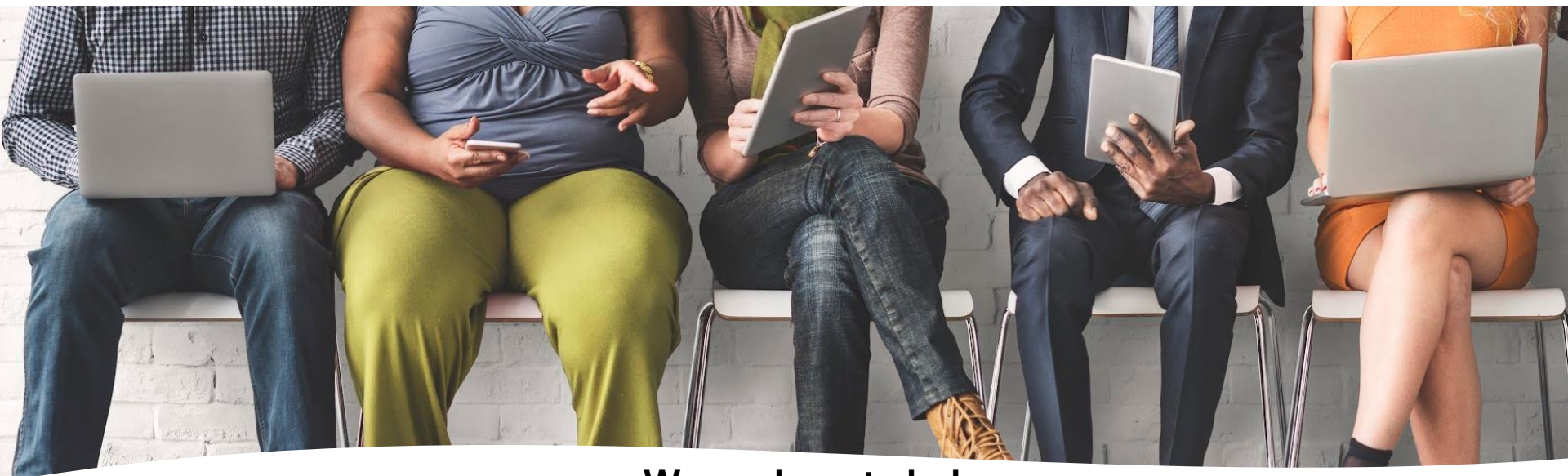
**Flyer of the changes is attached to your handout.**



## What are we doing now?

- 
- We are sponsoring premiums for DACA clients who are losing their coverage.
  - In addition, newly eligible residents with income below 100% of the FPL can have their premium sponsored.
  - Residents maybe eligible for the State's Cascade Care Premium Assistance program. Up to \$250.00
  - **Health Insurance Open Enrollment is November 1, 2025-January 15, 2025**





**We are here to help you.**

**Community  
Health Access  
Program (CHAP)  
1-800-756-5437**

**Health Insurance**

**ORCA Lift**

**Basic Food**

**Energy Assistance**

**Help Finding a Medical/Dental Provider**

**Breast Cervical Colon Health Program**

**King County Adult Dental Program**

**Energizer Program (homeowners and renters  
access energy-efficient low- or no-cost heat  
pumps and other upgrades)**

**Access & Outreach Team  
Field/ Chinook/ Storefronts  
Team**  
**chap@kingcounty.gov**  
**800-756-5437**

**Metro Storefront  
(Next to Metro Customer Service)  
201 S Jackson St  
Seattle, WA 98104**

**Federal Way Storefront  
1640 South 318<sup>th</sup> Place  
Federal Way, WA 98023**

**Skyway Resource Center  
12610 76<sup>th</sup> Ave S  
Seattle, WA 98178**

**Daphne Pie  
Regional Health Services  
Administrator  
(206) 263-8369  
daphne.pie@kingcounty.gov**

Willie Allen (English) Supervisor South County 206-263-8746 willie.allen@kingcounty.gov	Cindy Mai (Vietnamese) 206-477-6959 cindy.mai@kingcounty.gov	Miguel Urquiza (Spanish) 206-477-6965 miguelurquiza@kingcounty.gov
Yvette Angel (Spanish) (206) 477-7259 yvette.angel@kingcounty.gov	Bishaw Gezie (Amharic) 206-477-6961 bishaw.gezie@kingcounty.gov	Carmen Olvera (Spanish) 206-550-6119 <a href="mailto:carmen.olvera@kingcounty.gov">carmen.olvera@kingcounty.gov</a>
Callista Kennedy (English) (206) 263-8368 callista.kennedy@kingcounty.gov	Luis Salazar (Spanish) 206-263-8261 luis.Salazar@kingcounty.gov	Brenda Kelek (Marshallese) 206-477-7358 bkelek@kingcounty.gov
Claudia Sierra (Spanish) 206-477-7272 claudia.sierra@kingcounty.gov	Jennifer Covert (English) 206-263-1179 jennifer.covert@kingcounty.gov	Erick Salas (Spanish/Portuguese) (206) 263-2835 <a href="mailto:erick.salas@kingcounty.gov">erick.salas@kingcounty.gov</a>
Nai Saechao (English) (206) 477-8110 nai.saechao.@kingcounty.gov	Robbie Carrier (English) (206) 477-8341 robbie.carrier@kingcounty.gov	Ben Huh (Korean) (206) 477-7269 bhuh@kingcounty.gov
Fartun Mohamed (Somali) (206) 477-9628 fartun.mohamed@kingcounty.gov	Cristel Solis-Barrientos (Spanish) (206) 477-0544 cristel.solis-barrientos@kingcounty.gov	Marlon Hall (English) ABCD Program Manager (206) 263-0995 <a href="mailto:abcd@kingcounty.gov">abcd@kingcounty.gov</a>
Shonita Savage (English) Program Manager, Community Health Partnerships (206) 263-2025 <a href="mailto:Shonita.Savage@kingcounty.gov">Shonita.Savage@kingcounty.gov</a>	Giselle Zapata-Garcia (Spanish) Equity Team (Hispanic/Latinx) King County Adult Dental Program(KCADP) (206)263-0104 <a href="mailto:gzapata@kingcounty.gov">gzapata@kingcounty.gov</a>	Devon Love (English) Equity Team(Black Community) 206-263-7901 <a href="mailto:devon.love@kingcounty.gov">devon.love@kingcounty.gov</a>

## Closing Reflections & Next Steps

- Questions?
- Please let us know about your experience today, scan QR code on agenda
- Exchange contact information with 3 new people
- Please take the welcome packets with you and share broadly
- Expect a follow-up email with electronic versions of the materials shared today
- Visit resource tables
- Enjoy the Museum of Flight
- Be safe, take care of yourselves, and each other

